



Virginia Healthcare Workforce Briefs

Indicators from the Bureau of Labor Statistics'
Current Employment Statistics Survey
Series 2: Regional & Sectoral Employment

Series 2, Issue 125

August 2022

Inside this Brief:

Regional Employment	2
Regional Employment Growth	3
Subsector Employment	3
Subsector Employment Growth	4
Region Map	5
About the Data	6

Highlights

- ◆ Data in this series are not seasonally adjusted and exhibit short-term volatility from fluctuations in holidays, weekends, weather and other seasonal factors. Estimates for the most recent month are preliminary.
- ◆ In July, Northern Virginia enjoyed the strongest HC&SA employment growth in the state. This region produced 2,500 new HC&SA jobs in July, a gain that translates into a 23.3% annualized growth rate. At the same time, the Rest of Virginia added 2,300 new HC&SA jobs, which represents an equally impressive 22.5% annualized growth rate. Hampton Roads increased HC&SA employment by 1,200 in July, while Richmond's HC&SA sector created 100 new HC&SA jobs during the month.
- ◆ Ambulatory Health Care Services created 4,200 new jobs in July, a gain that represents an impressive one-month annualized employment growth rate of 27.8%. Social Assistance also enjoyed strong employment growth in July with the creation of 1,000 new jobs during the month. Meanwhile, Hospitals increased employment by 600 in July, while Nursing & Residential Care Facilities created 300 new jobs during the month.

Data in this report are not seasonally adjusted. Self-employed persons, including health professionals in private practice, are not included.

Data in Brief

Not Seasonally Adjusted*	Employment, in Thousands				Growth Rate, Annualized		
	July 2021	Apr. 2022	June 2022	July 2022	12 Month	3 Month	1 Month
Virginia							
Total Nonfarm	3,958.2	4,042.5	4,077.8	4,076.4	3.0%	3.4%	-0.4%
Health Care & Social Assistance	448.7	454.8	458.2	464.3	3.5%	8.6%	17.2%
Hampton Roads							
Total Nonfarm	777.8	777.4	787.3	790.8	1.7%	7.1%	5.5%
Health Care & Social Assistance	93.0	93.1	95.2	96.4	3.7%	15.0%	16.2%
Northern Virginia							
Total Nonfarm	1,496.8	1,519.6	1,538.0	1,530.0	2.2%	2.8%	-6.1%
Health Care & Social Assistance	139.1	140.5	142.2	144.7	4.0%	12.5%	23.3%
Richmond							
Total Nonfarm	673.7	672.8	682.5	682.9	1.4%	6.1%	0.7%
Health Care & Social Assistance	85.3	85.5	86.2	86.3	1.2%	3.8%	1.4%
Rest of Virginia							
Total Nonfarm	1,009.9	1,072.7	1,070.0	1,072.7	6.2%	0.0%	3.1%
Health Care & Social Assistance	131.3	135.7	134.6	136.9	4.3%	3.6%	22.5%

Preliminary estimates are italicized

*Seasonally adjusted data are adjusted by the Bureau of Labor Statistics to account for weather and other seasonal changes. Since the U.S. Bureau of Labor Statistics does not provide seasonally adjusted data at this level, this series uses non-seasonally adjusted data exclusively. Seasonal variation may account for some of the variation in time series data. When comparing data in this series to other HWDC series or other publications it is important to note whether the data reported have been seasonally adjusted.

Regional HC&SA Employment Growth, Level

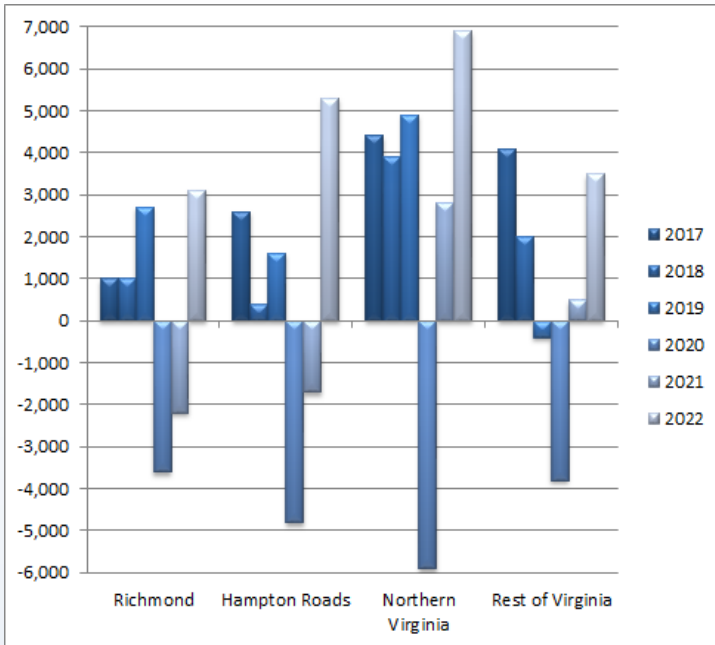


Figure 1: Annual & YTD Change in HC&SA Regional Employment (Not Seasonally Adjusted, Full-Year Change for 2017-2021, Year-to-Date Change for 2022).

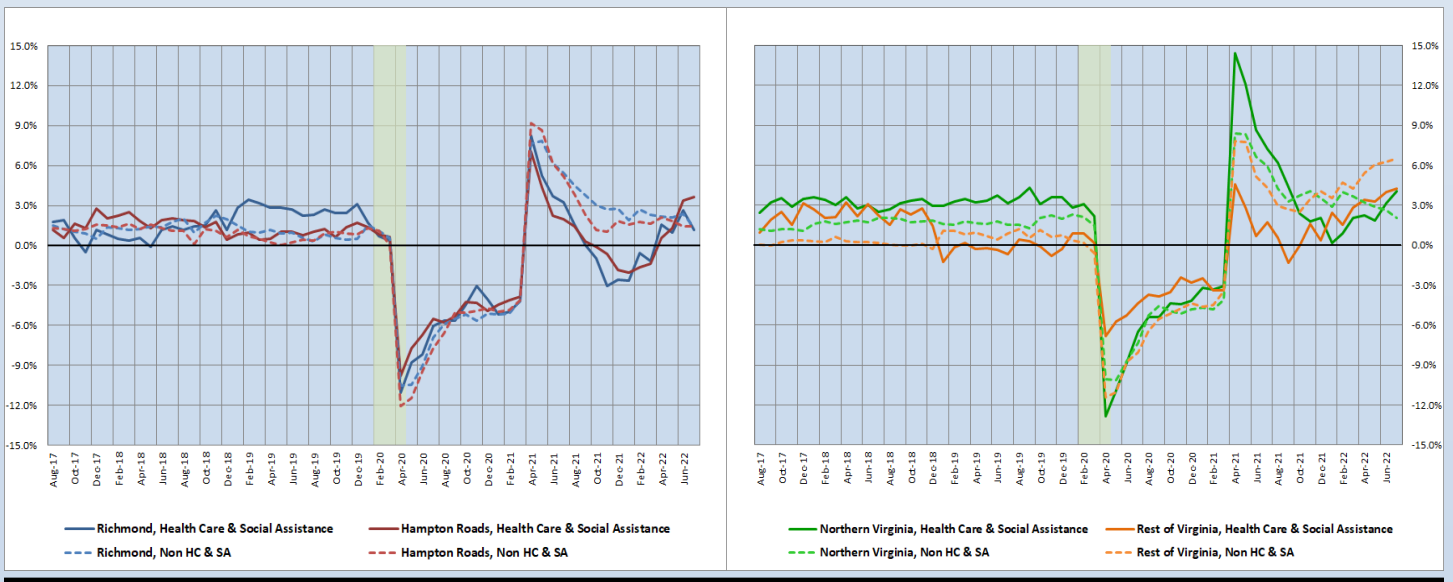
According to the preliminary data released on Friday, August 19, 2022, by the U.S. Department of Labor, Bureau of Labor Statistics, every region in the state enjoyed positive Health Care & Social Assistance (HC&SA) employment growth in July. This growth was strongest in Northern Virginia’s HC&SA sector, which increased employment by 2,500 during the month. This increase represents a one-month annualized employment growth rate of 23.3%. With this gain, Northern Virginia has now increased HC&SA employment in each of the past six months. Even accounting for January’s decline in employment, Northern Virginia has still created 6,900 HC&SA jobs so far this year.

The Rest of Virginia also enjoyed very impressive HC&SA job growth during the month. In July, the Rest of Virginia created 2,300 new HC&SA jobs, which translates into a 22.5% annualized employment growth rate. At the same time, Hampton Roads also experienced strong HC&SA employment growth with the creation of 1,200 new jobs. As for Richmond, its HC&SA sector produced 100 new jobs during the month.

Year-Over-Year Regional Employment Growth

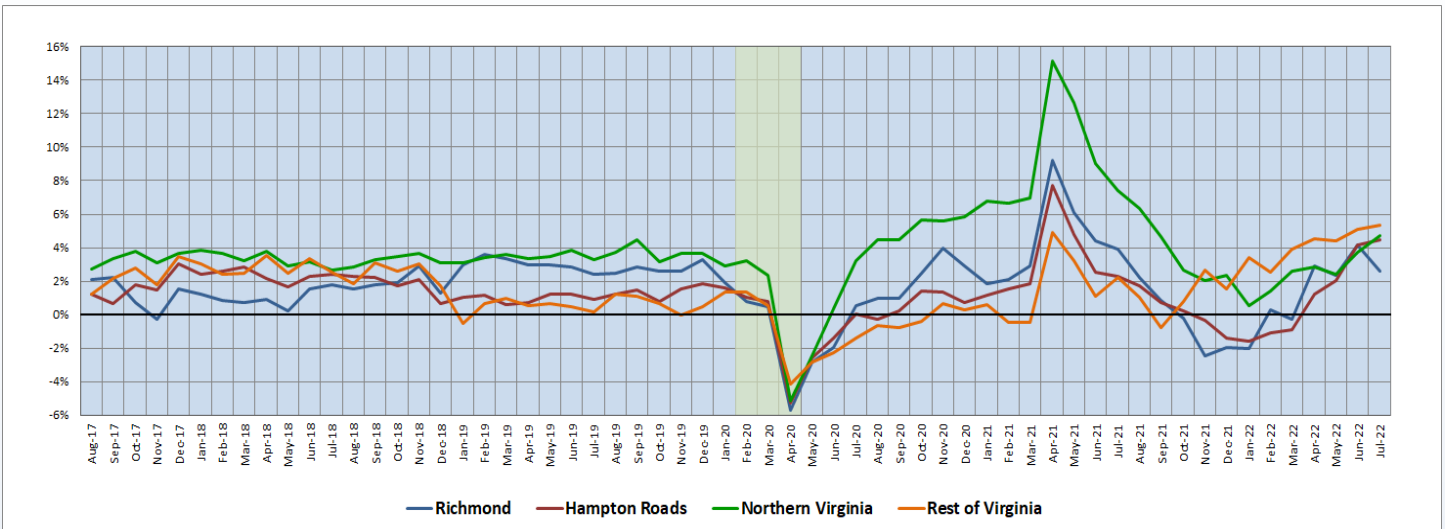
The Rest of Virginia, Northern Virginia, and Hampton Roads all saw their respective year-over-year HC&SA employment growth rates reach year-to-date highs in July. The Rest of Virginia saw its year-over-year HC&SA employment growth rate drift upwards from 4.02% to 4.27% in July, while the comparable growth rate for Northern Virginia experienced a somewhat larger increase from 3.12% to 4.03% during the month. As for Hampton Roads, its year-over-year HC&SA employment growth rate increased from 3.37% to 3.66% in July. On the other hand, Richmond’s HC&SA sector saw its year-over-year employment growth rate fall from 2.62% to 1.17% during the month.

Figure 2: Year-Over-Year Employment Growth (Not Seasonally Adjusted).



12-Month Average Employment Growth by Region

Figure 3: 12-Month Moving Average, HC&SA Regional Employment Growth Rate (Not Seasonally Adjusted).



The Rest of Virginia continues to enjoy the highest 12-month HC&SA employment growth rate moving average in the state. In June, the Rest of Virginia’s 12-month HC&SA employment growth rate moving average crossed the 5% threshold for the first time since 2008, and this moving average increased even further from 5.07% to 5.35% in July. At the same time, Northern Virginia saw its 12-month HC&SA employment growth rate moving average increase from 3.70% to 4.73%, thereby reaching its highest value in nearly one year. As for Hampton Roads, its 12-month HC&SA employment growth rate moving average reached its highest value in more than one year after increasing from 4.17% to 4.49%. However, Richmond’s HC&SA sector saw its own moving average fall significantly from 4.18% to 2.61% during the month.

Subsector Employment Growth

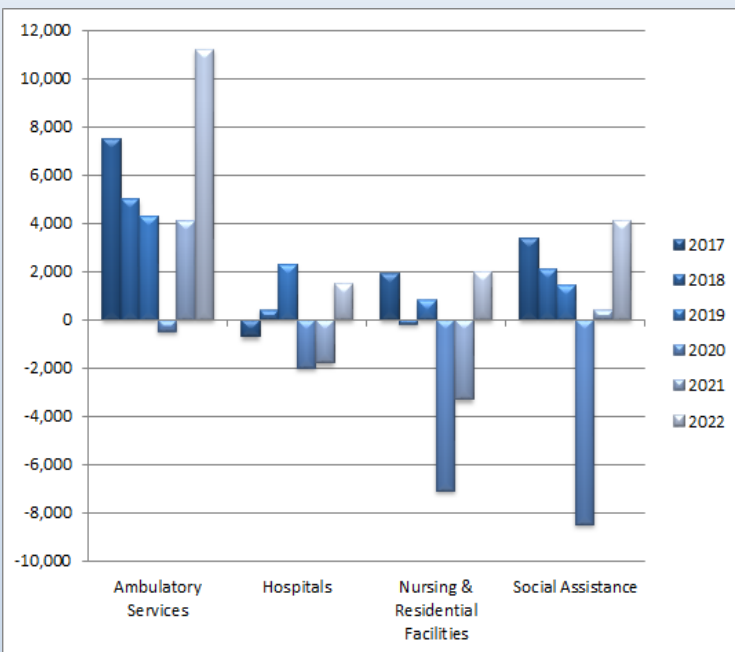


Figure 4: Annual & YTD Change in HC&SA Subsector Employment (Not Seasonally Adjusted, Full-Year Change for 2017-2021, Year-to-Date Change for 2022).

For the second consecutive month, all four of Virginia’s HC&SA subsectors enjoyed positive employment growth. In both of these months, Ambulatory Health Care Services were responsible for a majority of the state’s total HC&SA employment gain. In June, Ambulatory Health Care Services created 2,100 jobs, a gain that represented just over half of the 3,900 total HC&SA jobs produced across the state during the month. In July, this HC&SA subsector was responsible for an ever greater fraction of the state’s total HC&SA employment gain. Ambulatory Health Care Services created 4,200 new jobs in July, or approximately two-thirds of the 6,100 HC&SA jobs created in Virginia during the month.

Social Assistance created 1,000 new jobs in July, thereby representing its largest monthly employment gain since March. Meanwhile, Hospitals and Nursing & Residential Care Facilities added 600 and 300 new jobs, respectively, during the month. These two HC&SA subsectors have now increased employment in each of the past four months.

Distribution of Growth by Subsector

Not Seasonally Adjusted	Employment, in Thousands				Growth Rate, Annualized		
	July 2021	Apr. 2022	June 2022	July 2022	12 Month	3 Month	1 Month
Virginia							
Health Care & Social Assistance	448.7	454.8	458.2	464.3	3.5%	8.6%	17.2%
<i>Ambulatory Health Care Services</i>	197.0	202.8	203.6	207.8	5.5%	10.2%	27.8%
<i>Hospitals</i>	105.6	104.6	105.5	106.1	0.5%	5.9%	7.0%
<i>Nursing & Residential Care Facilities</i>	68.7	69.1	70.1	70.4	2.5%	7.7%	5.3%
<i>Social Assistance</i>	77.4	78.3	79.0	80.0	3.4%	9.0%	16.3%
Hampton Roads							
Health Care & Social Assistance	93.0	93.1	95.2	96.4	3.7%	15.0%	16.2%
<i>Hospitals</i>	21.8	21.7	21.9	22.1	1.4%	7.6%	11.5%
Northern Virginia							
Health Care & Social Assistance	139.1	140.5	142.2	144.7	4.0%	12.5%	23.3%
<i>Ambulatory Health Care Services</i>	71.7	74.1	75.5	77.2	7.7%	17.8%	30.6%
<i>Hospitals</i>	26.0	26.1	26.4	26.6	2.3%	7.9%	9.5%

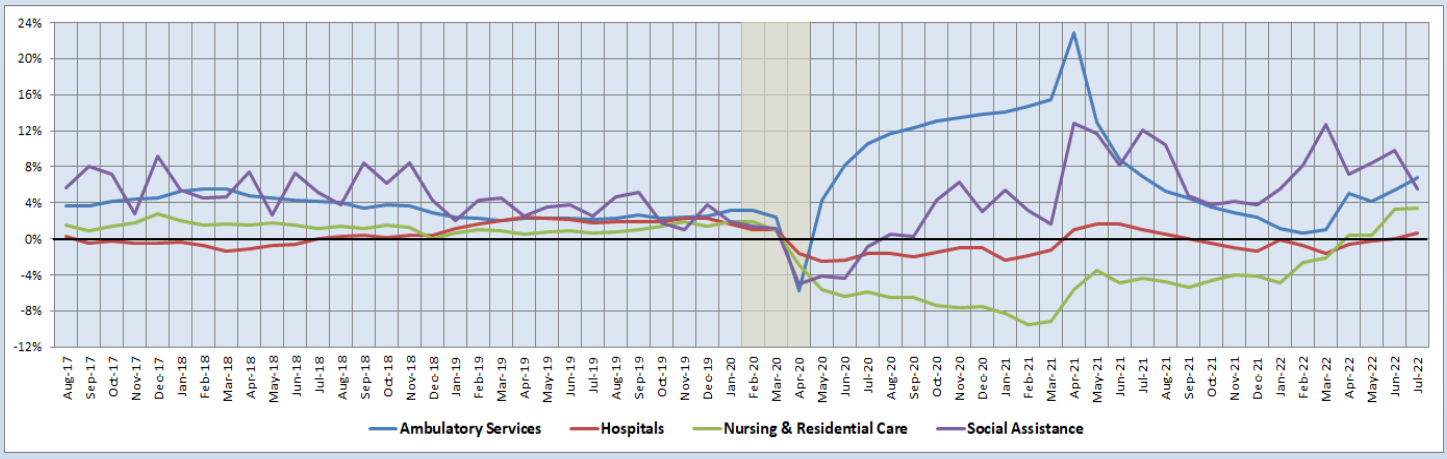
Preliminary estimates are italicized

Both short-term and long-term HC&SA employment growth in Virginia are currently strongest in Ambulatory Health Care Services. Ambulatory Health Care Services have increased employment at a 27.8% annualized rate in July and at a 10.2% annualized rate over the past three months. Furthermore, their 12-month employment growth rate of 5.5% is also the highest among Virginia’s four HC&SA subsectors. In any case, these other HC&SA subsectors are also enjoying strong job growth in recent months. For instance, Social Assistance created jobs at a 16.3% annualized rate in July. At the same time, Hospitals and Nursing & Residential Care Facilities increased employment by 7.0% and 5.3%, respectively.

12-Month Average Employment Growth by Subsector

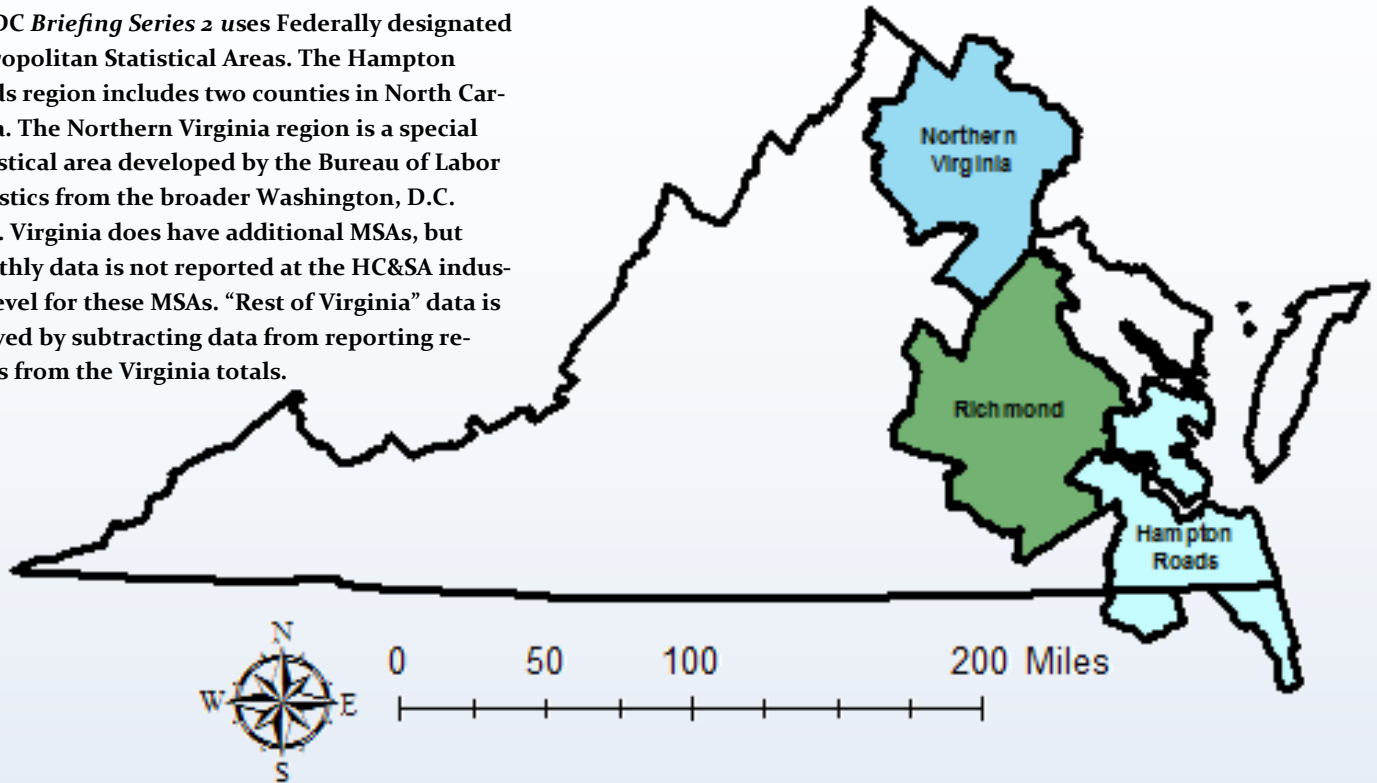
For the first time in just over one year, Ambulatory Health Care Services have the highest 12-month employment growth rate moving average in the state. In July, Ambulatory Health Care Services saw their 12-month employment growth rate moving average increase from 5.41% to 6.76%, thereby overtaking the comparable moving average of Social Assistance, which was cut nearly in half from 9.86% to 5.50% during the month. Meanwhile, Nursing & Residential Care Facilities experienced a small uptick to its 12-month employment growth rate moving average from 3.27% to 3.41% in July. As for Hospitals, their own moving average jumped to a one-year high from 0.01% to 0.60% during the month.

Figure 5: 12-Month Moving Average, HC&SA Subsector Employment Growth Rate (Not Seasonally Adjusted).



Region Map

HWDC *Briefing Series 2* uses Federally designated Metropolitan Statistical Areas. The Hampton Roads region includes two counties in North Carolina. The Northern Virginia region is a special statistical area developed by the Bureau of Labor Statistics from the broader Washington, D.C. MSA. Virginia does have additional MSAs, but monthly data is not reported at the HC&SA industry level for these MSAs. “Rest of Virginia” data is derived by subtracting data from reporting regions from the Virginia totals.



Region Detail

Northern Virginia		Richmond		Hampton Roads	
<i>Northern VA, (Non-standard CES Area 94783)</i>		<i>Richmond, VA (MSA 40060)</i>		<i>Virginia Beach-Norfolk-Newport News, VA-NC (MSA 47260)</i>	
Counties:	Cities:	Counties:	Cities:	Counties:	Cities:
Arlington	Alexandria	Amelia	Colonial Heights	Gloucester	Chesapeake
Clarke	Fairfax	Caroline	Hopewell	Isle of Wight	Hampton
Culpeper	Falls Church	Charles City	Petersburg	James City	Newport News
Fairfax	Fredericksburg	Chesterfield	Richmond	Mathews	Norfolk
Fauquier	Manassas	Dinwiddie		Surry	Poquoson
Loudoun	Manassas Park	Goochland		York	Portsmouth
Prince William		Hanover			Suffolk
Rappahannock		Henrico		<i>Currituck, NC</i>	Virginia Beach
Spotsylvania		King William		<i>Gates, NC</i>	Williamsburg
Stafford		New Kent			
Warren		Powhatan			
		Prince George			
		Sussex			

Healthcare Workforce
Data Center

Perimeter Center
9960 Mayland Drive, Suite 300
Henrico, VA 23233-1463

Phone: (804) 597-4213
Fax: (804) 527-4434
E-mail: hwdc@dhp.virginia.gov
Website: www.dhp.virginia.gov/PublicResources/HealthcareWorkforceDataCenter

HWDC Staff:

Yetty Shobo, PhD
Director

Rajana Siva, MBA
Data Analyst

Christopher Coyle
Research Assistant

The Department of Health Professions Healthcare Workforce Data Center works to improve the data collection and measurement of Virginia's healthcare workforce through regular assessment of workforce supply and demand issues among the 80 professions and 350,000 practitioners licensed in Virginia by DHP.

The HWDC collects data on Virginia's licensed health professionals through surveys completed during the online license renewal and application process. Survey results and data may be accessed on our website: www.dhp.virginia.gov/PublicResources/HealthcareWorkforceDataCenter/.

The HWDC also provides a series of Virginia Healthcare Workforce Briefs based data collected by the U.S. Department of Labor's Bureau of Labor Statistics and the U.S. Department of Commerce' Bureau of Economic Analysis.

Virginia Healthcare Workforce Briefs:

Series 1: State & National Employment (Monthly)

Series 2: Virginia Regional Employment (Monthly)

Series 3: Income & Compensation (Quarterly)

Follow us on. . .

Tumblr: <http://vahwdc.tumblr.com/>

About the Data

Data in this report are from the U.S. Department of Labor Bureau of Labor Statistics' Current Employment Statistics program. The CES program surveys about 143,000 businesses and government agencies monthly. Unless otherwise noted, this series uses data that are not seasonally adjusted. Seasonal variations related to weather, holidays, weekends, seasons and other predictable variations are apparent in the data. Short-term changes may be related to seasonal changes rather than underlying trends. Data from recent months is preliminary and subject to revision in future releases from the CES. Revisions will be reported in future editions of this series. Unless otherwise noted, the CES data presented in this series:

Includes:

- ◆ Data on employed individuals drawing a paycheck (payroll employees).
- ◆ All employees, regardless of role, occupation or hours worked.
- ◆ HC&SA employees in the private sector only.
- ◆ Persons employed by health professionals in private practice.
- ◆ Both government and private sector workers in nonfarm employment data.

Does not include:

- ◆ Self-employed workers or volunteers, including health professionals in private practice.
- ◆ HC&SA employees in the public sector. (These are counted as government workers in monthly reports).
- ◆ Information on hours worked or the quality of employment.
- ◆ Government workers in HC&SA level data. (Government workers, regardless of occupation and role, are classified as public sector employees).